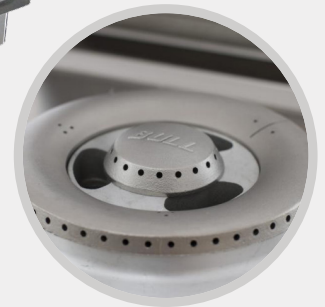


## SIDE BURNERS

|   |           |                           |                              |
|---|-----------|---------------------------|------------------------------|
| <b>Drop-in Single Side Burner</b>                                     |           | #60008CE                  | LPG                          |
|   |           | #60009CE                  | NG                           |
| 304 Solid Cast Stainless Steel Burner.                                |           |                           |                              |
| 304 Solid Stainless Steel Grate. <b>GAS CONNECTIONS NOT INCLUDED.</b> |           |                           |                              |
| Piezo Ignition / Drop-In Design.                                      |           |                           |                              |
| <b>Specifications</b>   |           |                           |                              |
| CE Certified  | 4.40 kWh  |                           |                              |
| <b>Dimensions</b>   |           | <b>Cut out Dimensions</b> |                              |
| L 31.8 cm   | D 54.7 cm | H 14.5 cm                 | L 28.8 cm D 44.5 cm H 8.5 cm |
| CTN Length  | 0.58 Mts  | CTN Height                | 0.20 Mts                     |
| CTN Width   | 0.34 Mts  | CTN Weight                | 8.6 Kg   1 Pcs               |



|   |           |                           |                              |
|---|-----------|---------------------------|------------------------------|
| <b>Slide - In Double Side Burner</b>                                      |           | #30008CE                  | LPG                          |
|   |           | #30009CE                  | NG                           |
| 304 Stainless Steel Construction & Removable Cover.                       |           |                           |                              |
| Solid Cast S/Steel Burners/Slide in. <b>GAS CONNECTIONS NOT INCLUDED.</b> |           |                           |                              |
| Solid Stainless Steel Grates & Piezo Igniter System.                      |           |                           |                              |
| <b>Specifications</b>   |           |                           |                              |
| CE Certified  | 7 kWh     | 13.15Kg                   | Slide in Design              |
| <b>Dimensions</b>   |           | <b>Cut out Dimensions</b> |                              |
| L 33.5 cm   | D 62.3 cm | H 24.4 cm                 | L 30.5 cm D 52.8 cm H 2.4 cm |
| CTN Length  | 0.69 Mts  | CTN Height                | 0.29 Mts                     |
| CTN Width   | 0.37 Mts  | CTN Weight                | 15 Kg   1 Pcs                |

